



# INVENTORYFLOW

APKE INVENTORY KA SAHI FLOW



INVENTORYFLOW

Manage Factory **NOT** ERP

**AUTOMATION**  
**ACCURACY**  
**PROFITABILITY**

# Tired of These Operational Headaches?



Manual Work Order  
and Inventory  
Management



Material  
Shortages or  
Overstocking



Budget  
Constrains



Disjointed  
Processes



Burden of  
Switching  
Between sheets  
and docs



Limited  
Scalability



# Why InventoryFlow?



- **Designed for SMEs – Tailored for small and medium-sized businesses, especially in manufacturing and metal fabrication.**
- **Manufacturing Execution System (MES) – A complete solution to manage, monitor, and optimize production processes.**
- **Streamlined Inventory & Order Management – Automate workflows and reduce manual effort.**
- **Minimize Waste & Maximize Efficiency – Optimize resource usage and cut unnecessary costs.**
- **Actionable Insights – AI-powered analytics to improve decision-making and boost profitability**
- **Intuitive & User-Friendly – Simple, click-based interface for seamless operations.**
- **Affordable & Scalable – Cost-effective pricing with features that grow with your business.**





**User Activity Dashboard**



**Work Order Integration**



**Material Requisition**



**Purchase Order Management**



**GRN Creation**



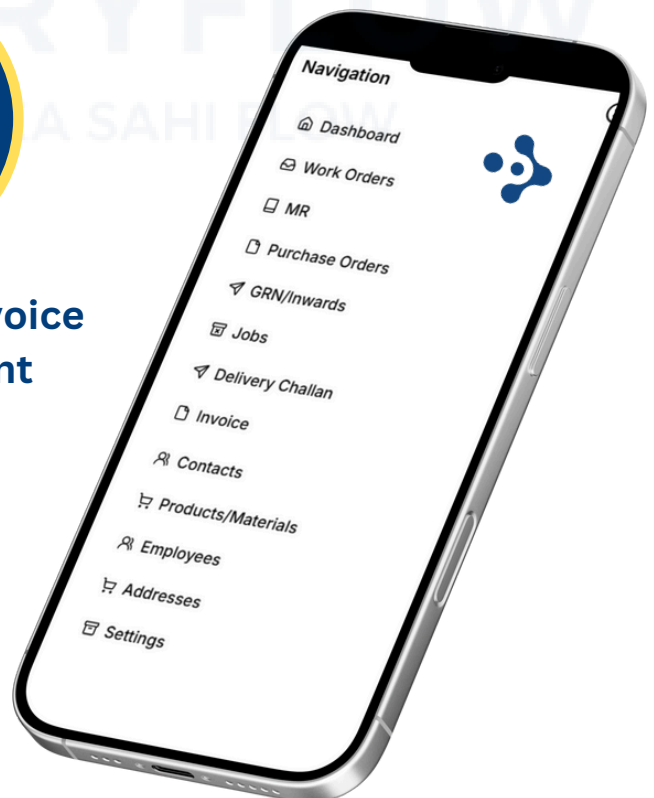
**Jobs**



**Delivery Challan Generation**

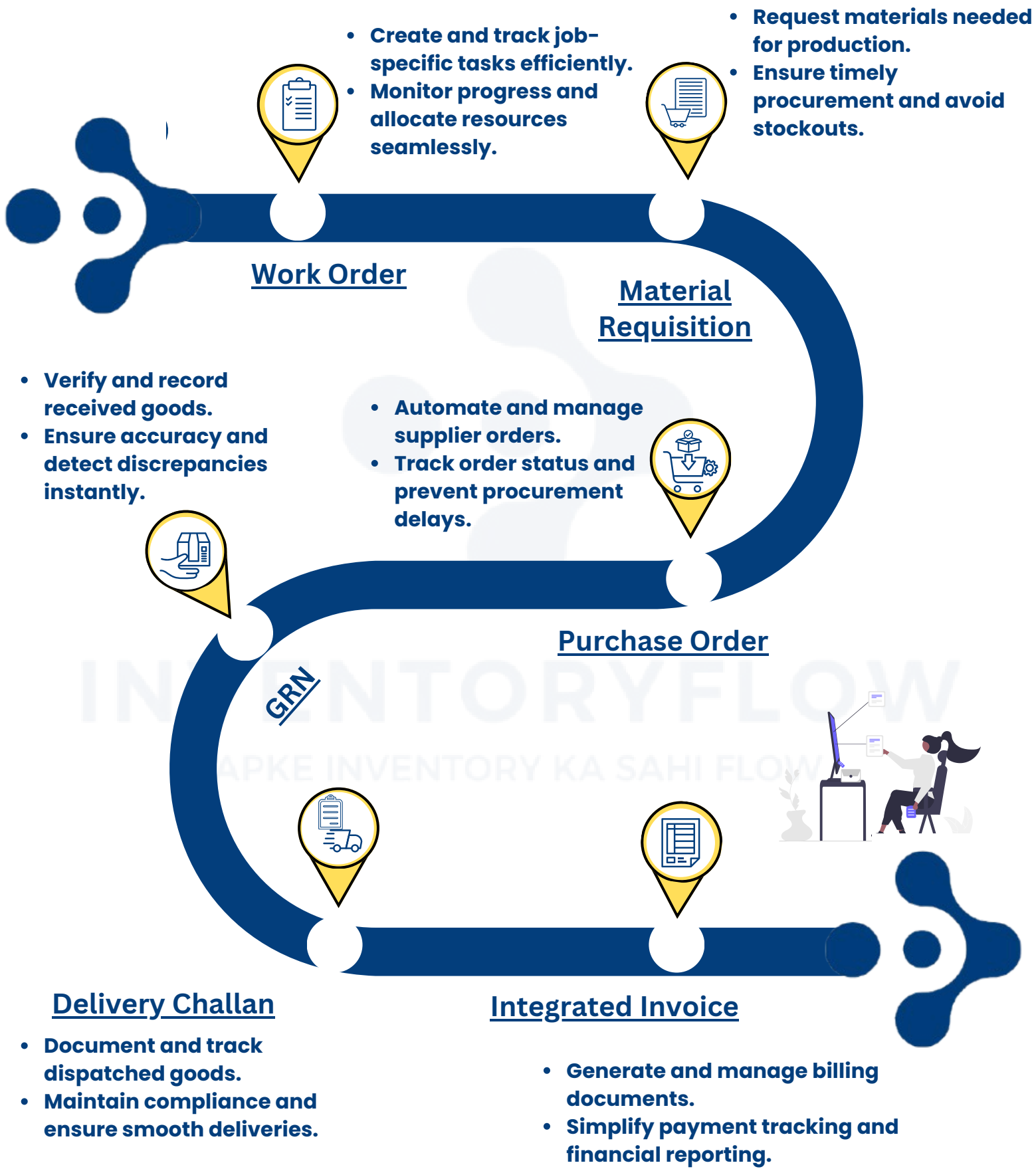


**Integrated Invoice Management**



# Flow of Modules

Seamless Process, Smarter Operations





# InventoryFlow Objectives

Streamline your inventory and order management processes.

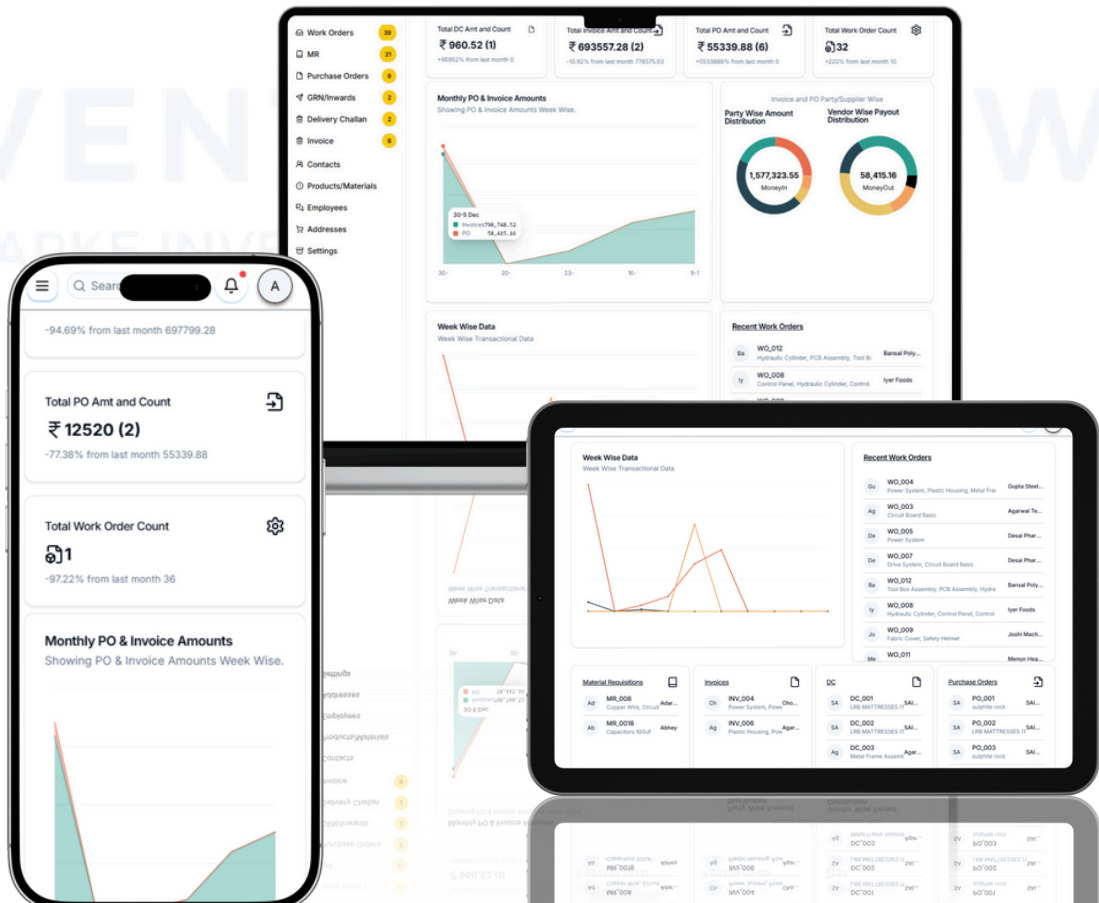


# Dashboard: Your Business at a Glance



Smart Dashboard for **Total** Business Control

- Gain real-time insights into your operations with InventoryFlow's intuitive dashboard.
- Track work orders, invoices, material requisitions, and purchase orders—all in one place.
- Visual analytics provide a clear breakdown of financials, including party-wise income, vendor payouts, and monthly PO and invoice trends.
- With AI-driven automation, you can eliminate manual tracking, reduce errors, and make data-backed decisions faster.
- Stay ahead with a streamlined, easy-to-navigate interface designed for efficiency and growth.



# Contact us



**+91 8169511872**



**info@inventoryflow.in**



**Inventoryflow.in**



**WeWork 1st floor, Dr Annie Besant Rd,  
Municipal Colony, Worli Shivaji Nagar,  
Worli, Mumbai, Maharashtra 400025**

## Our Happy Clients



**DHARMI CORPORATE  
PRIVATE LIMITED**



**KOSHAR RESOURCES  
INDIA PRIVATE LIMITED**



**KIMAKH VENTURES  
PRIVATE LIMITED**







# INVENTORYFLOW

APKE INVENTORY KA SAHI FLOW



APKE INVENTORY KA SAHI FLOW

